

THE NEPTUNE

RNI Reg. No. ODI ENG/2013/53569

GLITZ

VOL - III | ISSUE - 34

AUGUST - 2016

₹ 100

Architecture & Interior Design Magazine

Shukla Villa

Architect Yatin Pandya

Residence Pores 34

Architect Ankita Sweety
Architect Pratyoosh Chandan

URBAN HAUS

Architect Swapnil Jaggi

Moti Mahal Delux

Architect Gargi Kumari

Green is not Beautiful...

is a MYTH or TRUTH ?

Architect Sudipta Singh

project

In the year 2009, Architect Ankita Sweety & Pratyosh Chandan initiated "Studio An-V-Thot Architects Pvt. Ltd." a Design Consultancy firm in Delhi. Since then the studio has taken up and completed several Architectural and Interior projects of varied nature, scale and sizes. The studio's core effort to convert a thought into reality has consistently led them for pursuit of excellence.



Conceptual Sketch of section depicting first floor



Residence Pores 34

The residence is a 1st & 2nd floor duplex where the planning immediately had to deal with de-cluttering the place as to bring in open plate structure and let the house breathe, to rejuvenate again after so many years. The family had expanded & hence the place had to be expanded. It was a challenge because of the limitations the old structure had, but with careful study of the structure, the architects were eventually able to dismantle the walls they did not need. Dismantling was even more tiresome, as there was a lot of stone presence at every face of the internal areas of the house, including stone domes, wall claddings, etc.



1980, A not so busy road in the Western part of Delhi, led to a not so dense locality, amidst a not so chaotic neighborhood, where stood a freshly developed residence praised for its grandeur by all who saw it.

2013, A very busy road in the Western part of Delhi, led to a dense locality, amidst a chaotic neighborhood, where stood a young boy looking at it in desperation for a change resonating with present times.

Soon, the boy & the father sat across the architects, at the studio, with sheer pleasure on their faces as the architects talked about the possibilities and the eventual future of their dream house.





The lower floor has a living room, a lounge adjacent to a double height lobby, a kitchen overlooking the dining area, a powder room, master bedroom with a walk-in dress leading to an attached toilet. A terrace cum courtyard has been pulled inside to touch the inner parts of the floor, which also can be opened up completely to become a part of the master bedroom.

As you enter the house, a giant white wall of JALI greets you with a suspense as it beholds the space behind it, while leading one's eyes to the upper floor, creating an innate connection between the floors. The jali acts as a partition between the Dining & the Lobby which then travels vertical to become the Railing at the first

FIRST FLOOR LAYOUT



"An-V-Thot" is a hybrid of two words, (anvit) Sanskrit & (thought) English. "anvit" means followed by, so it is actually a studio followed by a thought, and as the name suggests both Ankita & Pratyosh are always eager to and strive to define their endeavors in a thought evolving and settling manner.



Ankita Sweety

Ar. Ankita Sweety graduated with a distinction in her Architectural Degree from NIT Patna and during the course, also won numerous National and State level Design Contests of repute. Since then she was associated with one of the leading design firms in New Delhi for two years. She is also a Visiting Faculty at an Architecture College in Gurgaon. Apart from that she confidently holds the post of country's editing member for World Architecture Community. ●



SECOND FLOOR LAYOUT



floor. This was made using wooden frames holding square laser cut MDF boards especially painted in white duco, for letting its pattern do the drama.

As there are two sets of sit-outs on this floor, the architects have tried to develop the Living Room through a formal outlook, using dark wood & dark brown leather sofas, a few tall artefacts sit at the corners, two center tables are placed at hand's reach with green pockets to add life, which are kept on to a pastel shaded warm rug. The false ceiling has been kept subtle with the use of wallpaper wrapped floating roof combined with linear bands of wooden frames adding warmth. The rich ambience has been enhanced using a large back lit wall hang that acts as an artefact adding grace to the whole area. On a contrast to it, the lounge has a totally relaxed spatial feel to it, with deep hugging grey sofas & a nice bunch of cushions on it. The complete floor which turns on to the front wall is of rough cudappah stone in its natural form, complemented by the linear bands of wallpaper at the ceiling level. The whole place is wearing a vibrant attire though a number of colorful artefacts, paintings and an even more youthful set of SS finished center tables sitting atop a contemporary colorful rug.



Pratyosh Chandan

After graduating in Architectural Technology & Construction Management from Rai University, Ar. Pratyosh Chandan worked with an established firm in Delhi for three years wherein he led various design projects of diverse nature. He then went to UK to further pursue his architectural critique, from University of Brighton, UK. Thereafter he co-created Studio an-v-thot with Ankita to provide design solutions. ●



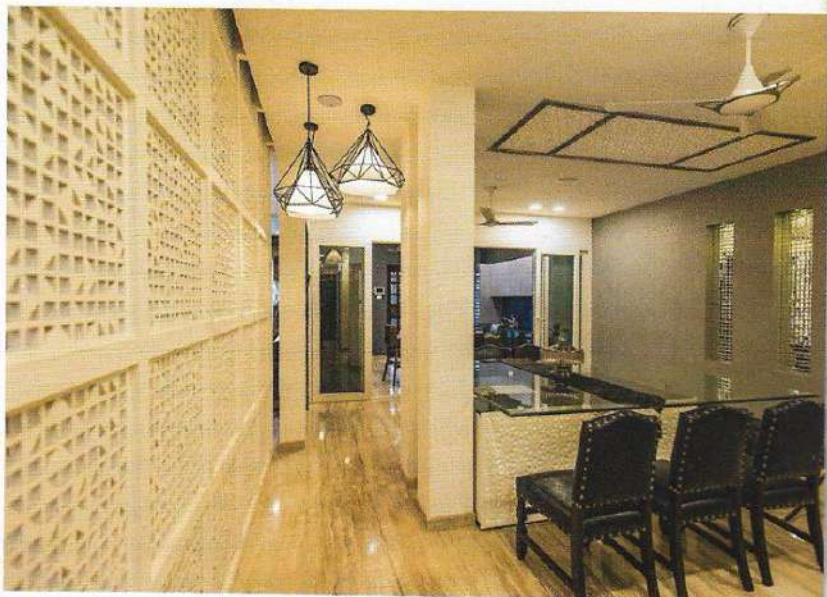


Two original bedrooms were combined to become the master bedroom on this floor, the focal point of the bedroom is the courtyard with vertical garden all through one side of the room. The master bedroom is placed at the rear of the house, which faces south



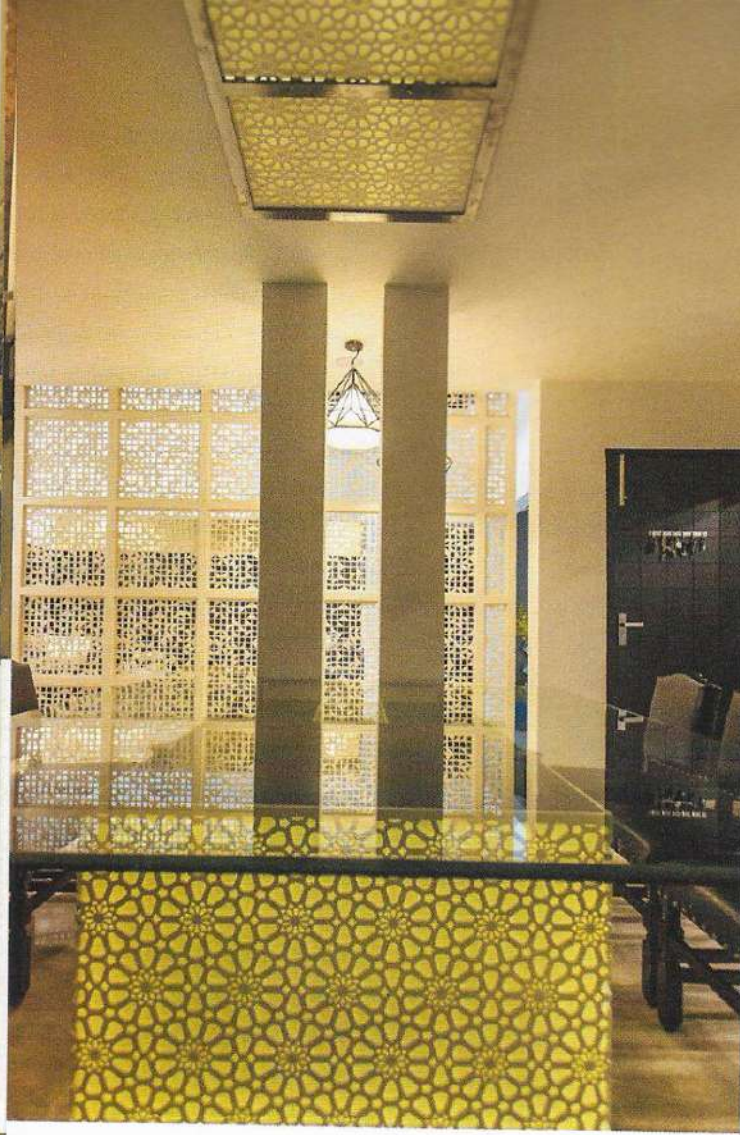
west, so the openings were closed and desire to bring in indirect sunlight resulted in the creation of this court. The court can behave as a private outdoor terrace, and at times may become a part of the bedroom as per user's choice, with the help of 3 paneled UPVC sliding doors. The terrace has a vibrant yellow recliner complementing the vertical green, a fix bench with multiple foot massagers and a platform placed at the other deep end hosting a huge & magnificent back lit artefact sitting in a bed of pebbles. The bedroom houses a private sit out area, a study, a walk-in dress cum closet with a play of warm carpeted floor, hanging lights etc., which leads to the private washroom equipped with Jacuzzi, steam and two cubicles to house WC & the shower area, finished with dark Emperador Italian stone on the floor as well as the wall.



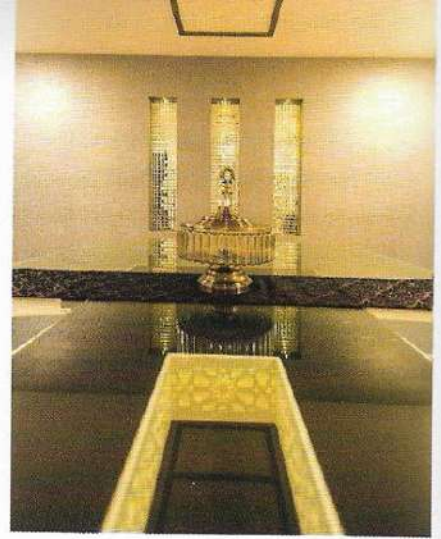


Behind the white wall of JALI, sits a 10 seater Dining, here the table is a glowing square box of back lit, laser cut Corian with glass on top protruding out from all sides. It has 6 chairs with blue leather & a bench with SS legs, the laser cut Corian design is repeated on the ceiling level to bring in a connection. The back wall of this area is covered with sky blue patterned wallpaper hosting three vertical niches with glass mosaic cladded inside them. A rich leather wrapped console & a framed mirror accentuates the adjacent wall. The Dining area overlooks the kitchen, which hosts a wide island counter finished using blue composite with 2 high rise chairs. The colors in the

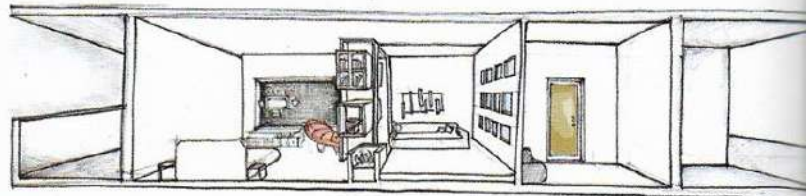




Studio AVT firmly believes in the uttermost importance of the space within & beyond rather than the built frame. They endeavor to design and develop an environment for stories to take birth and remain, where true feelings are captured and felt with a sense of belonging, only to resonate through time. "They intend to breathe" is what their motto is.



kitchen are a mix of light grey and dark grey present as the overhead & under-counter storages, where vibrancy is added at the back splash using toughened lacquered glass in the shade of blue. The kitchen also has a service balcony attached to it at the back.



Conceptual Sketch of section showcasing Second Floor



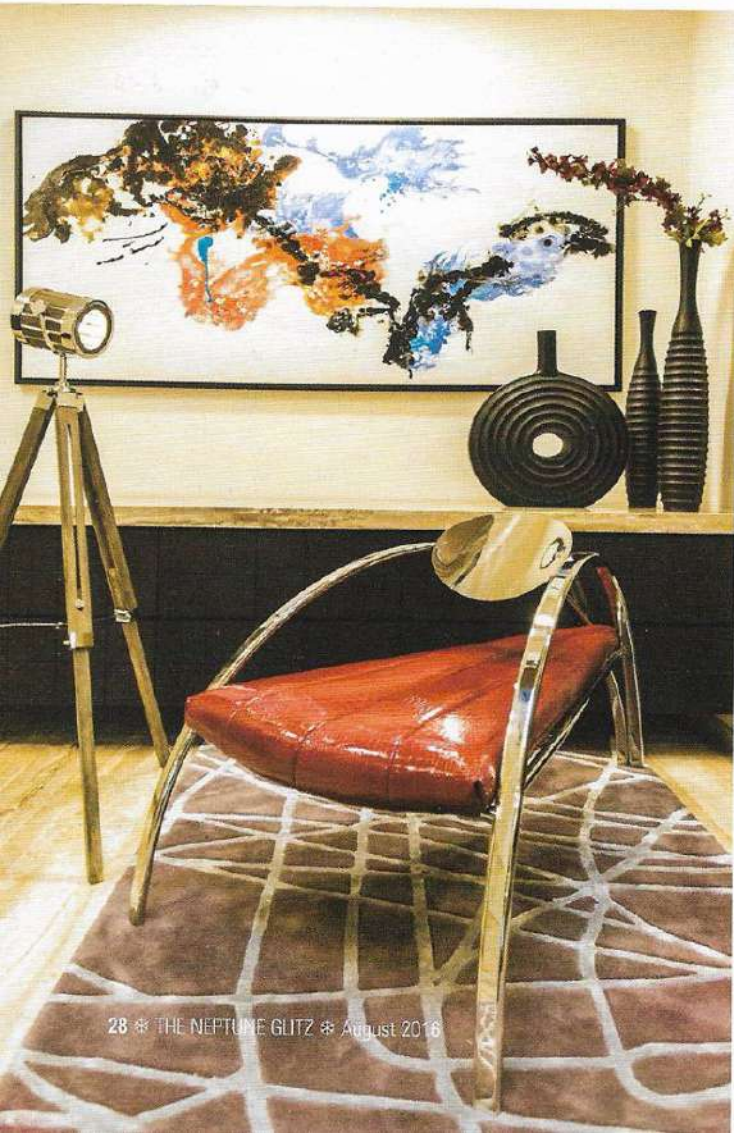


The Central Lobby at this floor has a linear rug, where at the deep end, a designer curvilinear chair made of SS & red leather, is placed and an antique studio light post compliments the chair from the side. The backdrop here has a wooden finished hanging storage and a six feet wide painting with splashes of colors creating yet another focal point. Such focal points were carefully thought of at various intervals throughout the house.

FACT FILE:

Project Name	- Residence: Pores 34
Location	- New Delhi
Completion Date	- August 2015
Built-up Area	- 5000 Sq ft.



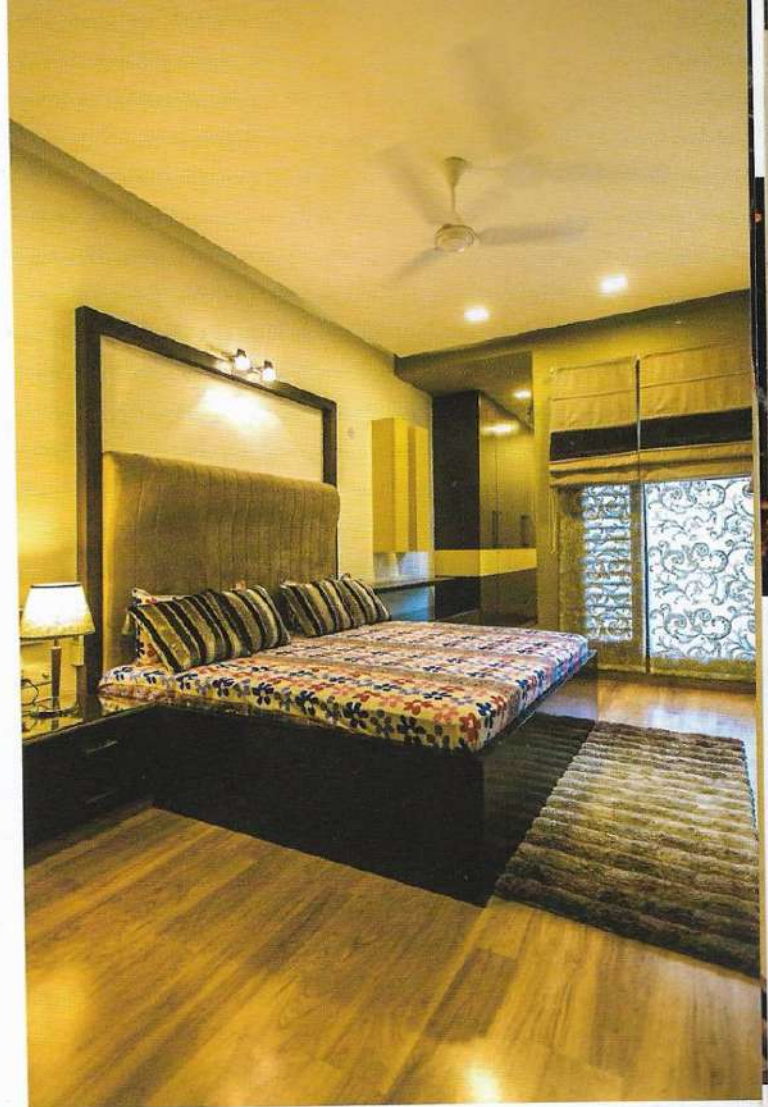


The upper floor has a Foyer with waiting, an extended newlywed's bedroom cum lounge with attached dress & washroom, a guest room with attached dress & washroom, a family lounge, a massage/meditation room, a multi-purpose room and a powder room. A central lobby here acts as a circulation space with a visual connects to the lower floor.

A very important area of this floor was the newlyweds bedroom, for their specific brief to create their room in a way so as to accommodate a complete home within a room, where they could cater to their guests, work at their study, read at the library, enjoy newspaper with coffee at their lounge under the sun or enjoy a private sit-out at their terrace. All this was achieved through linear extension of the existing room so as to accommodate an existing living area within the room's periphery. Now, with a 30' x 12' enclosure, there was a need to create a visual disconnect so as to divide the whole area into two parts, this was done by creating a study that turned onto the wall, extending to the ceiling and finally dropping at the floor while becoming a library with show compartments. With this insertion, the room was visually divided into two halves, where one was catered as the bed area and the other half became a lounge with fixed seating's on a raised platform. A separate pocket was attached to the bed area, which is used as a walk-in dress, secretly also opening onto a private terrace with a set of patio furniture. The whole ambience was intended to be youthful yet

classy, this was done using careful play of hidden lights with complementing hanging lights, a large niche with dark wallpaper at the back acted as a stage for LED, linear bands of cushioned leather ran across the bed-back, blue fabric at one end was used for blinds while the other end has multiple back-lit niches painted blue in the sea of grey. A courtyard was placed towards the center of the room to add life which was then complemented by bringing in shaded sunlight through a skylight positioned within the lounge area. The attached washroom was finished using black tiles which was then complemented by glittering silver mosaic adding sparkle to the couple's lives.

The Guest room sits at the rear left corner of the floor, which is of a subtle mix of warm colors. A bed with a fabric paneled back is at the center, to its right is the store cum dress area and to its left is a study with a small library. Wooden flooring has been used throughout this room, brown and beiges can be felt all over with careful insertions of yellow painted in duco. A light brown rug adds warmth here. At present, the multipurpose room is being used as a gym, with an attached washroom. The family lounge has been specifically kept dark with a relaxed feel to it. It's a rectangular room with half the portion raised by 6 inches, the front half houses two dark leathered automatic recliners and the rear half has deep push back sofas. The room has been face-lifted in a retro manner, achieved through the placement of many artefacts and wall hangs complementing



each other, the rear wall is finished with upholstered red leather to accentuate the retro. Adjacent to the family lounge, is a fairly small meditation room opening up to the north-east side of the house, bringing in uniform day light and especially creating refreshing mornings with a play of light and shadows with the help of vertical louvers covering the complete front wall.

As the central area of the house is a double height area, it was very important to enhance this area and bring in a visual connect between the floors. To start with, the architects dropped down the ceiling as a floating member to visibly decrease the distance between the floors, the hanging ceiling was then punctured to bring in natural light from above, and all the faces was then covered with wallpaper to add drama. The drama was then accentuated by custom made rectangular chandelier, which was further dropped down to enhance the connection. A laser cut, linear back-lit panel, and playful geometries on the wall act as the final touches to the painting of the refreshed house that the architects finally did manage to achieve.


This project is particularly one of the personal favorite, as it's a complete package of a brilliant story, wrapped in the perfect attire with an identity of itself. 

Image Courtesy: **Studio An-V-Thot Architects Pvt. Ltd.**
e-mail: studio.avt@gmail.com